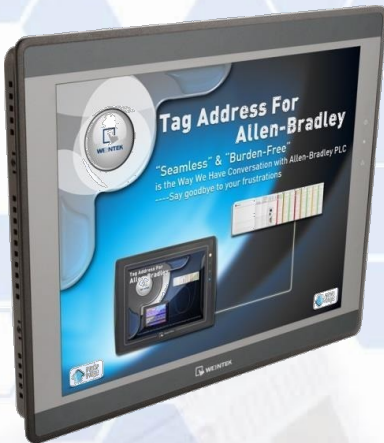


HMI with 15" XGA TFT Display



Feature

- Aluminum Housing
- 15" 1024 x 768 TFT LCD
- Fan-less Cooling System
- Built-in 4GB Flash Memory and RTC
- SD Card Slot Supports SD/SDHC Cards
- COM1 / COM3 RS-485 2W Supports MPI 187.5K, please use one at a time.
- CAN Bus Supports CANopen Protocol
- COM1 / COM3 RS-485 & CAN Bus Built-in Isolation
- Built-in Power Isolator
- NEMA4/IP65 Compliant Front Panel
- Built-in EasyAccess 2.0 License

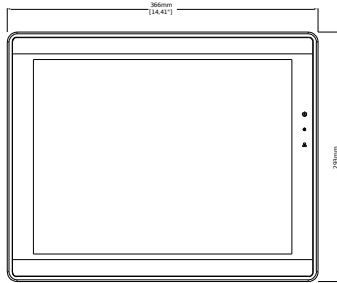
Display	Display	15" TFT
	Resolution	1024 x 768
	Brightness (cd/m ²)	400
	Contrast Ratio	700:1
	Backlight Type	LED
	Backlight Life Time	>50,000 hrs.
	Colors	16.2M
	LCD Viewing Angle (T/B/R/L)	70/70/80/80
Touch Panel	Type	4-wire Resistive Type / 5-wire Resistive Type
	Accuracy	Active Area Length(X)±2%, Width(Y)±2%
Memory	Flash	4 GB
	RAM	1 GB
Processor		32 bits RISC Cortex-A9 1GHz
I/O Port	SD Card Slot	SD/SDHC
	USB Host	USB 2.0 x 1
	USB Client	USB 2.0 x 1 (Micro USB)
	Ethernet	LAN 1: 10/100/1000 Base-T x 1 LAN 2: 10/100 Base-T x 1
	COM Port	COM1: RS-232/RS-485 2W/4W, COM3: RS-232/RS-485 2W*
	RS-485 Isolation	Yes
	CAN Bus	Yes
	HDMI	N/A
	Audio Output	Built-in Mono Speaker Audio Line Out - 3.5 mm jack x 1
	Video Input	N/A
RTC		Built-in
Power	Input Power	24±20%VDC
	Power Isolation	Built-in
	Power Consumption	900mA@24VDC
	Voltage Resistance	500VAC (1 min.)
	Isolation Resistance	Exceed 50MΩ @ 500VDC
	Vibration Endurance	10 to 25Hz (X, Y, Z direction 2G 30 minutes)
Specification	PCB Coating	Yes
	Enclosure	Aluminum
	Dimensions WxHxD	366 x 293 x 48.2 mm
	Panel Cutout	352 x 279 mm
	Weight	Approx. 2.45 kg
	Mount	Panel mount, VESA mount 75 x 75 mm
Environment	Protection Structure	UL Type 4X (indoor use only) / NEMA4 / IP65 Compliant Front Panel
	Storage Temperature	-20° ~ 70°C (-4° ~ 158°F)
	Operating Temperature	0° ~ 50°C (32° ~ 122°F)
	Relative Humidity	10% ~ 90% (non-condensing)
Certificate	CE	CE marked
	UL	cULus Listed
Software		EasyBuilder Pro V6.01.02 or later versions

*Only Tx & Rx (no RTS/CTS) may be used for COM1 RS-232 when COM3 RS-232 is also used.

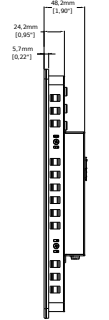
Dimensions



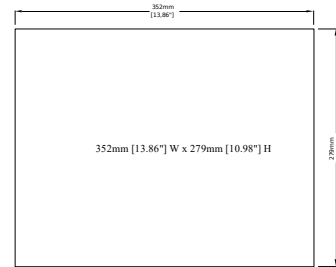
Top View



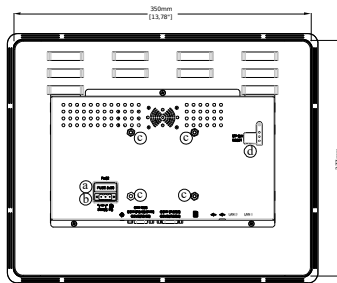
Front View



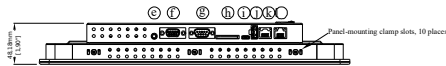
Side View



Cutout Dimensions



Rear View



Bottom View

a	Fuse	g	COM1 RS-232, COM3 RS-232
b	Power Connector	h	SD CARD SLOT
c	VESA 75mm Screw Holes	i	USB Client port
d	DIP SW & Reset Button	j	USB Host port
e	Line Out	k	LAN 2
f	COM1 RS-485, COM3 RS-485, CAN Bus	l	LAN 1

Ordering Information

- cMT3151:**
15" TFT LCD HMI, 4GB flash memory, 1GB RAM on board, Built-in EasyAccess 2.0 license
- RP0081500 (included in package)**
15" Screen Protective Film

Pin Assignment:

9 Pin, Male, D-sub COM1 / COM3 [RS232]

PIN#	COM1 [RS232]	COM3 [RS232]
1		
2	RxD	
3	TxD	
4		
5	GND	
6		
7	RTS	TxD
8	CTS	RxD
9		

9 Pin, Female, D-sub COM1 / COM3 [RS485]/ CAN Bus

PIN#	Com1 [RS485]2w	Com1 [RS485]4w	Com3 [RS485]2w	CAN Bus
1	Data-	Rx-		
2	Data+	Rx+		
3		Tx-		
4		Tx+		
5	GND (isolation)			
6			Data-	
7				CAN_L
8				CAN_H
9			Data+	